

## **Other Places to Visit**

### *Gifts, Art, Crafts & Antiques*

Ben Franklin Arts & Crafts - 31 E Stoddard - Downtown Dexter

Corner Cottage - 1424 W Bus 60 - Dexter

French Market - 11 E Stoddard - Downtown Dexter

The Loft & Java Dave's - 8 E Stoddard - Downtown Dexter

Metro Gallery - 1 E Stoddard - Downtown Dexter

Treasured Threads Quilt Shop- 14605 US Hwy 60 - Dexter

Old Timer's Antique Mall - 16655 N. Outer Rd - Dexter

### *Museums*

Bootheel Youth Museum - 700A N Douglas - Malden

Stars & Stripes Museum - Highway 25 - Bloomfield

### *Nature*

Mingo National Wildlife Refuge - 24279 St Hwy 51 - Puxico

### *Winery/Restaurant*

Boathouse Wine Company - County Road 252 - Bloomfield

Indian Hills Winery - 9625 County Road 250 - Puxico

# **SEMO Ag Leaders**

## **Presents**



**July 31—August 2, 2014**

**Dexter High School  
Dexter, MO**

## Schedule

### Thursday

- 4:00 pm Registration Begins  
4:00—8:00 pm Trade Show, Kids Tractor Pull,  
Antique Tractors  
6:30 pm Meal from Dexter Bar B Q  
8:00 pm Little River Program

### Friday

- 7:00 am Breakfast by FBC Mission Team  
8:00—11:30 am Load buses for morning tours  
Lunch by Tasteful Creations  
12:30 - 4:00 pm Afternoon tours  
6:30 pm Meal at Eagle's Lodge  
8:00 pm Dr. Jerry Crowover, Ozarks Storyteller

### Saturday

- 7:00 am Breakfast  
8:00 am Load buses for morning tours  
12:00 pm Meal from Hickory Log

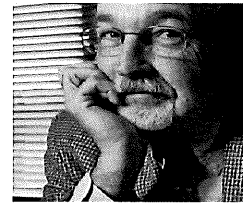
## Entertainment

### Little River Drainage District

Southeast Missouri's "Bootheel" is a natural basin for Mississippi River flooding. For much of its history, the land was an uninhabitable swamp. In the early twentieth century a system of ditches, levees and canals were constructed to drain the swampy land. It was the world's largest drainage project, and by its completion had moved more earth than the construction of the Panama Canal. The Little River Drainage District was constructed between 1914 and 1928. It consists of 957.8 miles of ditches and 304.43 miles of levees. It covers 540,000 acres and drains a total of 1.2 million acres. The District will have pictures to explain how this huge undertaking made this area one of the most agriculturally diverse in the state.

### Dr. Jerry Crowover Ozark Storyteller

Jerry Crowover was raised on a diversified livestock farm, deep in the heart of the Missouri Ozarks. He graduated from Gainesville High School, received a Masters from University of Missouri and a Doctorate from Mississippi State University. Dr. Crowover served as Professor of Agricultural Education at Missouri State University for 17 years. He resigned his position at MSU in 1997 to raise cattle. Jerry now works and lives on a beef cattle ranch in Lawrence County, Missouri with his wife, Judy. In addition to ranching, Jerry writes a bi-monthly column dealing with agriculture and life that appears in many magazines and newspapers throughout the Midwest. He presents both humorous and motivational talks to farm and youth groups.



## Blair Aviation

In 1984, Bob and Jane Blair started their own aerial crop dusting service, Blair Aviation. Since then they have continued to provide Southeast Missouri farmers with aerial services to crops such as wheat, rice, soybeans, corn, and cotton. Their operation runs seasonal, starting as early as February with the preparation of bare ground before planting and continues late in the fall with defoliation to help aide in harvest.

They have grown to flying two 802 turbines and having two pilots thus providing the business to cover numerous acres per day. Each plane has the ability to hold up to 800 gallons of liquid chemicals per load and on average 4,800 lbs of dry fertilizer per load.



## Martin Rice

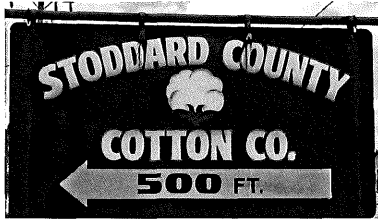
Martin Rice Company produces long grain and jasmine rice on it Southeast Missouri Farm. The company has dedicated thousands of acres to growing rice and operates its own processing facility at the same location.

This family operation began more than 50 years ago when the Martin's and their four children settled on 160 acres in the Missouri Bootheel, clearing the land using mules. Now, three generations later, the same family farms over 4,000 acres of prime rice-growing land. In January, 2000, the family constructed a rice processing facility to add value to the crop grown on the farm for over 25 years. With a dedication to quality, the Martin's produce rice under the strictest of guidelines offered by the USDA and the EPA.

Rice homegrown and milled by Martin Rice Company is shipped worldwide and is available in various sizes for both wholesale and retail sales so that you can buy rice by the pound or by the truck full, direct from the farm.



## Stoddard County Cotton Company

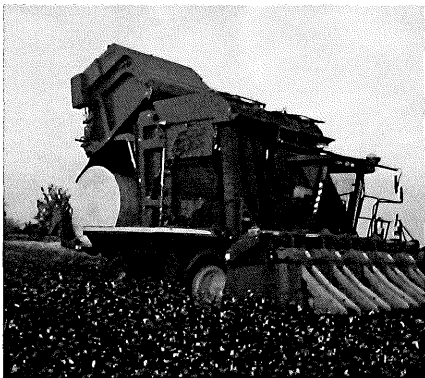


The Stoddard County Cotton Gin was originally built in 1973 by a group of more than 30 area farmers who wanted their cotton ginned in a more timely manner than what was available at the time.

The gin was operated by this group until 1993 when it was purchased by four local farmers who thought they could increase the amount of cotton ginned there and possibly expand the size of the gin. In 1994, a module feeder was added and the amount of cotton ginned went from around 5,000 bales per year to 15,000 bales per year.

Over the last 20 years, Stoddard County Cotton Company has undergone many changes to increase production, efficiency and the quality of the cotton ginned. Today the gin's capacity is around 800 bales per day when running 24 hours per day. The largest year for cotton ginned was 50,000 bales and currently is ginning around 20,000 bales per year.

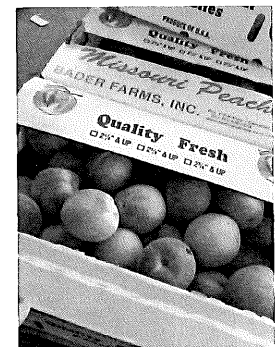
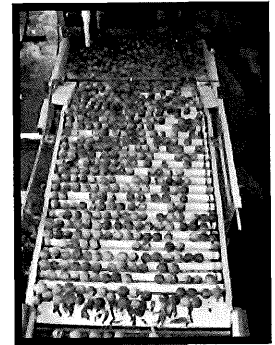
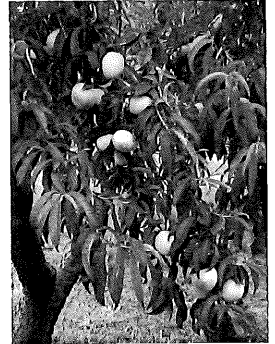
The cotton company is owned and operated by Rex Keller, Kenneth Keller, and Allen Below



## Bader Orchard

Like many youngsters growing up in the Bootheel region of Southeast Missouri, Bill Bader worked on peach farms each summer, picking, grading, packing and whatever was needed. That peach fuzz got under his skin and in 1986 he bought a 150-acre peach farm near Campbell, MO.

Bader found the Crowley's Ridge soil fertile with good protection from frost. That good soil and Bader's hard work has since increased that small farm to over 1,000 acres with nearly 110,000 trees! Bill and his wife, Denise, along with sons Levi and Cody, and daughter Breana, proudly operate the family farm throughout the year. They are assisted by Tom and Steve Bader, Bill's brothers, cousin Danny and numerous other relatives and friends at harvest time. During the summer months, Bader Farms employs about 110 workers. They begin picking the peaches at 6:00 am and then the peaches are brought in from the field, washed, inspected, packed and shipped to your retail grocer within 24 hours. Bader peaches are fresh and delicious right from the tree to you!

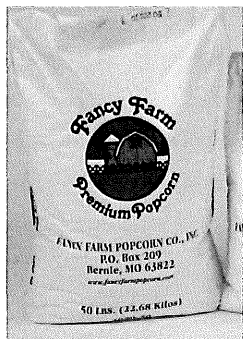


## Fancy Farm Popcorn

The Fancy Farm Popcorn Company is a family owned farming corporation that is located in the fertile Delta area of Southeast Missouri. Since we began first growing popcorn in 1987, we have always strived to select and grow the highest quality of the best varieties of popcorn that supply the needs of the concession and food service industries.

The foundation of our company is a genuine commitment to quality in every facet of production, growing part of the corn on our own land and trusting the remainder to experienced farmers, some of whom who have been farmers for generations. Customers have been loyal to our product and to the customer service that we provide.

Civic Clubs, fundraisers, school programs and service organizations have and will enjoy our premium theater-style popcorn for years to come. Our company has expanded rapidly. The success is driven by our people and their commitment to getting the best results in the right way and by operating responsibly and with excellence. We distribute our product nationwide from coast to coast.

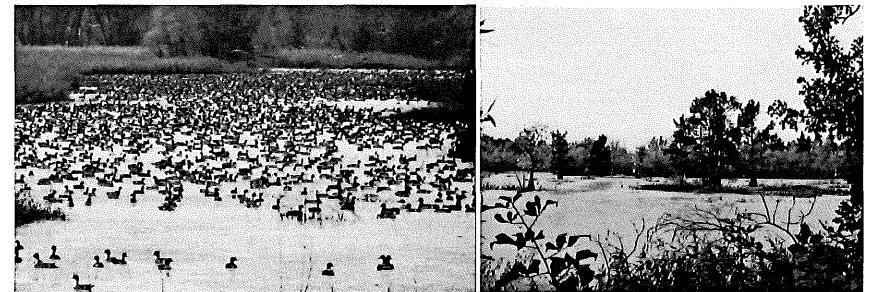


## Otter Slough Conservation Area

### Missouri Department of Conservation

Otter Slough is a small remnant of the former oxbow lakes and associated swamps that once were extensive throughout the Mississippi Lowlands prior to widespread artificial drainage efforts beginning in the late 19<sup>th</sup> century. Here you can catch a glimpse of what was once an amazing watery wilderness in Missouri's southeast corner. Water tupelo and bald cypress dominate the trees in the swamp. Both are adapted to living with waterlogged soils. However, periodic drawdowns of Otter Lake creating mudflats are needed for a few years in a row to allow the seedlings of the tupelo and cypress to germinate and grow large enough to survive another round of flooding. The seeds of both water tupelo and cypress float and are readily carried by floodwaters.

This wetland environment is good habitat for a variety of reptiles and amphibians including green tree frog, common snapping turtle, southern painted turtle and the broad-banded water snake. The waters of the slough support a number of fish species at the northern edge of their range, including the flier, slough darter and the banded pygmy sunfish. Other animals using the swamp include wood duck, great blue heron, green heron, muskrat, and swamp rabbit.



## Flowers Fish Farm

Flowers Fish Farm, LLC, a family owned and operated enterprise, has been a part of the aquaculture industry for almost fifty years.

A pioneer in Missouri aquaculture, Bill Flowers founded the fish farm utilizing his educational background in chemistry and biology. With the support of Jane, his wife, Bill, a secondary school educator, devoted his evenings and summers to the development of the farm along with his three sons, Stan, Tim, and Kevin. Although Kevin took over the management of daily operations in 1985, Bill Flowers continued to provide guidance and expertise until his death.

Stan and Tim Flowers also remained active in the fish farm through the formation of a partnership with Kevin Flowers. This partnership, Flowers II Fish Farms, expanded the farm with the creation of ninety additional water acres north of Dudley, Missouri, and the purchase of an existing 225 acre fish farm near Fisk, Missouri. As a result, Flowers Fish Farm has grown significantly from its origin of twelve acres to over 425 water acres, making it one of the largest fish farms in the Midwest.

Spread out over three locations, Flowers Fish Farm generally hatches and raises over three million channel catfish annually. Additional fish species include: bluegill, hybrid bluegill, white amur (diploid grass carp), fathead minnows, redear, crappie, koi, and largemouth bass. The supply of channel catfish fingerlings and food fish to wholesale vendors is the primary market for the fish farm. Additional in-state and out-of-state vendors purchase a variety of fish species for resale to private pond owners. Retail services are also provided seasonally to pond owners in our area.

Flowers Fish Farm is currently owned and managed by Kevin Flowers.



## Rinehart Farms

Rinehart Family Farms is a family operation that thrives in being successful in every aspect of farming. Our family has been farming rice since the late 60's. Farming today is more than driving a piece of equipment. To be successful, you have to be innovative, unique and very particular in each and every practice. Every year farming becomes more expensive. Profit margins continue to shrink, making every decision more crucial than the one before it.

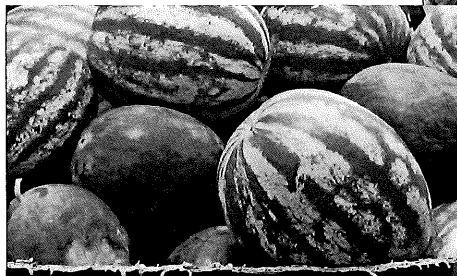
Our third generation operation is now a father-son endeavor, with the recent retirement of my grandfather Max. He is still very active in the everyday operation where he picks and chooses his hours and tasks. We farm rice, beans and wheat. We are looking for different ways to expand everyday. Like most farms in our area, we strive to grow the best crop that the land will provide. The business side of farming can be very easily overlooked. We try to make that our number one priority with each and every decision that we make. The most important part of our operation is the men that work with us on a daily basis. Farming on the scale that we try to farm on can be very difficult and exhausting. We believe that you are only as good as the people you surround yourself with and right now we are blessed to have an outstanding group of men.



## Roberts Produce

Roberts Produce & Flowers is a family business started by Jeff Roberts in 1989. The farming operation is comprised of approximately 30 acres of watermelons, 8 acres of cantaloupes, 4000-6000 tomato plants, 4 acres of sweetcorn, and various other vegetable crops. All of the crops are harvested by local farm labor, and are sold at our produce market outside of Broseley, Missouri and also to wholesalers in the Midwest.

In addition to the produce operation, Roberts Produce & Flowers operates 10 greenhouses that sell annual flowers in the spring, as well as mums, pumpkins and fall decorations.



## Donors

Bernie Farmers Gin, Inc

Southern Bank

## Silver Donors

AgriGro

Baker Implement

Gibson Lime Company

First Midwest Bank

Irrigation Central

Riley Trailer Sales

Stoddard County SWCD

Stoddard County Seed

Tweedy Law Office

## Gold Donors

**MFA OIL**  
FUELS • PROPANE • LUBRICANTS  
*Serving agricultural customers with exceptional products and services since 1929.*  
(800) 366-0200  
Membership PAYS - ask for details. [www.mfaoil.com](http://www.mfaoil.com)

**USDA**  
Missouri Farm Service Agency



*People...Products...Knowledge...*



Bayer CropScience



**AgXplore**  
[www.agxplore.com](http://www.agxplore.com)  
*Tomorrow's Science for Today's Yield*



## Platinum Donors



**AgriGold**  
WE KNOW CORN

**JASON MAYER**  
Corn Specialist  
c 573.820.1797  
17449 Oakwood Dr.  
Dexter, MO 63841  
jason.mayer@agrigold.com  
agrigold.com

**J.P.ROSS COTTON CO.**  
fertilizer-seeds-chemicals-ginning  
\*\*\*\*\*  
200 CLAY ST.  
P.O.BOX 37  
ESSEX, MO 63846

(573)283-5313 office  
rosscotton@newwavecomm.net

(573)283-5735 gin  
(573) 283-5380 fax



## Platinum Donors



*We would like to take  
this opportunity to  
thank every company  
and individual who has  
helped to make this tour  
a reality and a possi-  
bility. We hope that  
you enjoy your time  
with us here in the  
Bootheel of Missouri!!*

